

Psychology
PAPER 1

Friday 19 May 2023 – Afternoon

Time: 1 hour 45 minutes

Diagram Booklet

In the boxes below, write your name, centre number and candidate number.

| | | | | | |
|------------------|--|--|--|--|--|
| Surname | | | | | |
| Other names | | | | | |
| Centre Number | | | | | |
| Candidate Number | | | | | |

INSTRUCTIONS

There may be spare copies of some diagrams in case you need them.

THIS DIAGRAM BOOKLET **MUST BE RETURNED WITH THE
QUESTION PAPER AT THE END OF THE EXAMINATION.**

Contents

Page

4 Question 1(a)

5 Question 4

6 Question 12(c)

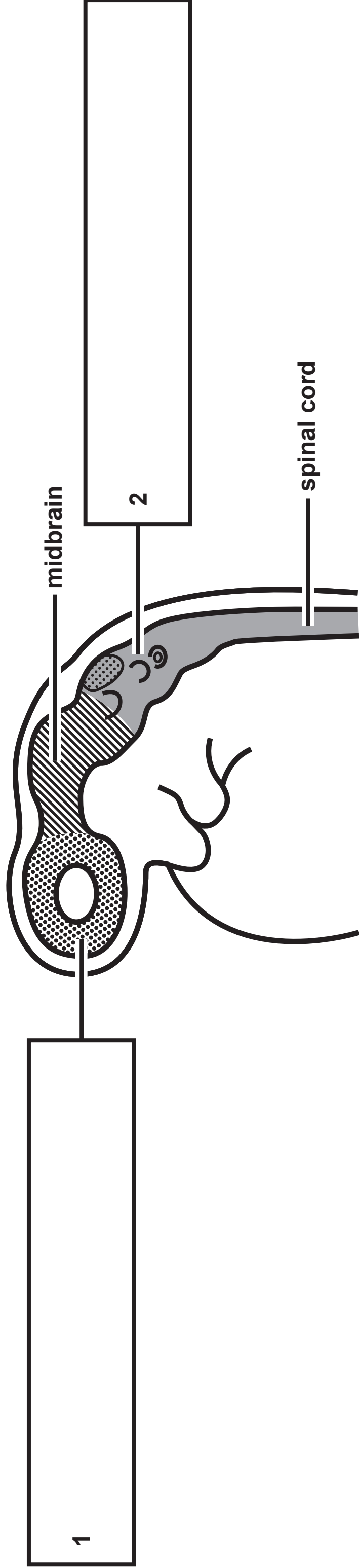
7 Question 17

8 Question 20

Spare Copies

9 Question 1(a)

FIGURE 1



Question 4

FIGURE 2

KEY



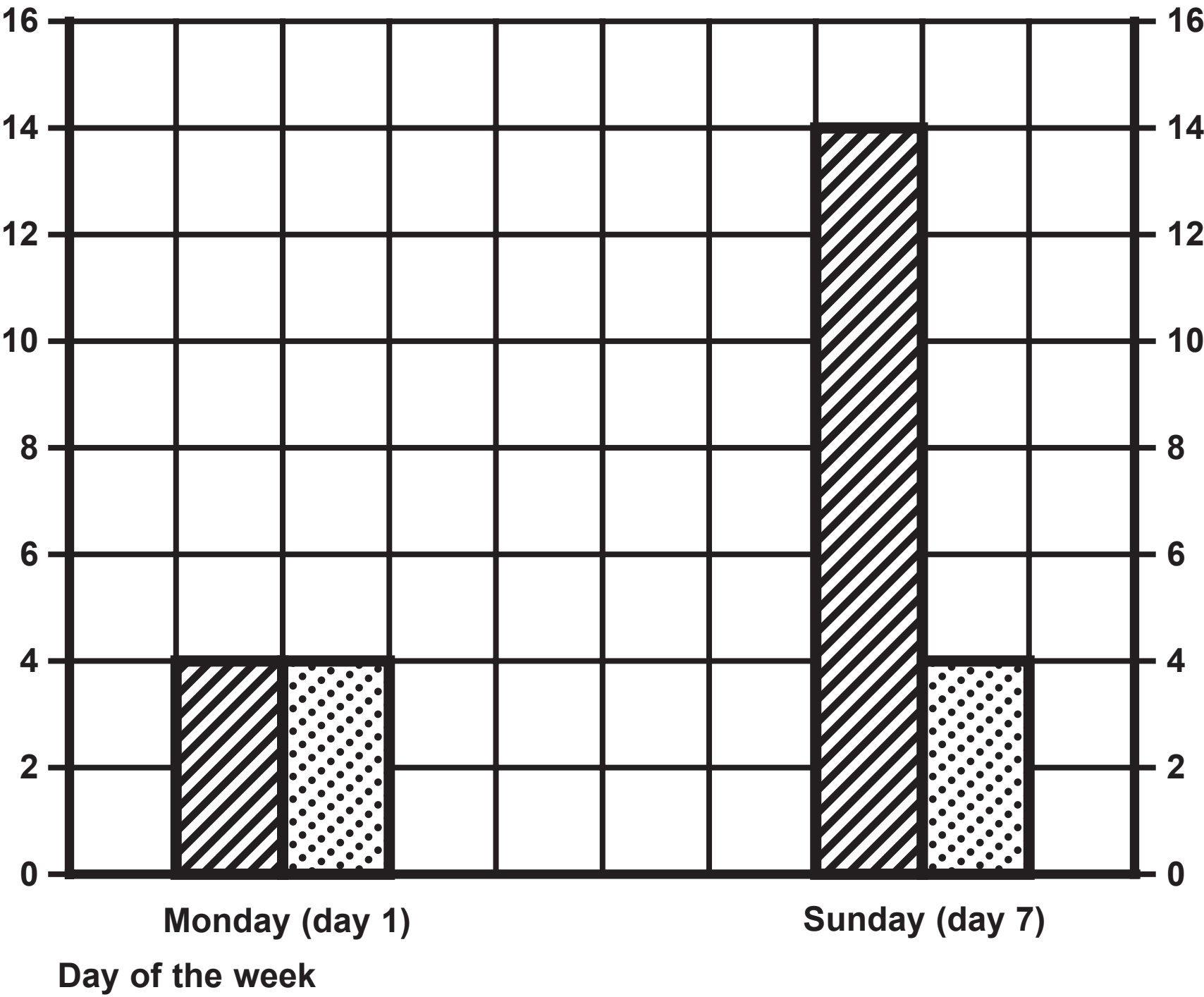
Niece



Nephew

A comparative bar chart to show the time (in seconds) that the niece and nephew were able to juggle at the beginning and end of the week.

Time juggling (seconds)



Question 12(c)

TABLE 1

| | New antidepressant 'H3-a' | Standard antidepressant |
|---|---------------------------|-------------------------|
| Average percentage (%) of patients reporting relapse in symptoms after 1 year | 22 | 35 |
| Average percentage (%) of patients reporting severe side effects | 25 | 15 |

Question 17

TABLE 2

| Group | Average performance on the face task before the investigation (% correct) | Average performance on the face task after the investigation (% correct) |
|--------------------|---|--|
| Training programme | 41 | 60 |
| Control | 39 | 38 |

TABLE 3

| Average time (mins) the fifth running machine was used in the morning session | | | Average time (mins) the fifth running machine was used in the afternoon session | |
|---|-----|-----|---|---------------------------|
| No confederates / stooges | | | With confederates / stooges | No confederates / stooges |
| Monday | 100 | 118 | 113 | 115 |
| Tuesday | 98 | 110 | 112 | 110 |
| Wednesday | 97 | 112 | 96 | 95 |

FIGURE 1

